

Crash Analysis Query: Untitled



20 crash events matched the analysis criteria.
20 of 20 crash events successfully geo-located.

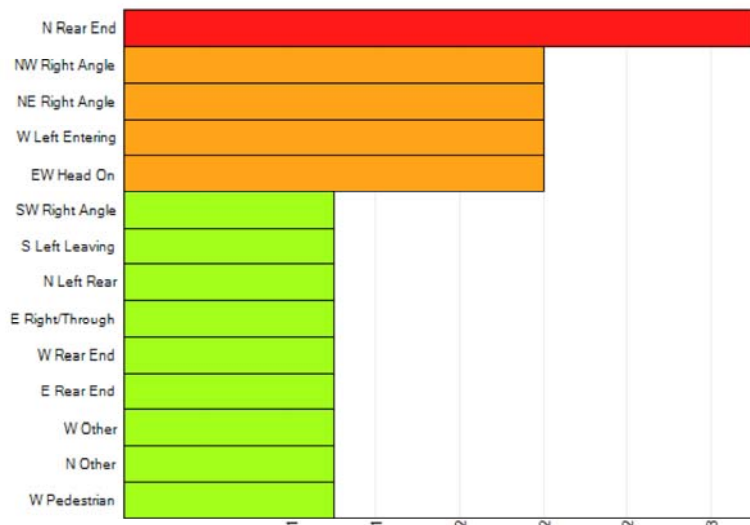
▼ ANALYSIS CRITERIA

Crash Date: between 08/01/2015 and 08/31/2018
Offset Distance: 300
Geographic Extent: Intersection of Northlake Blvd and Hall Blvd

▼ VISUALIZATION MAP

Launch visualization map to view results geographically.

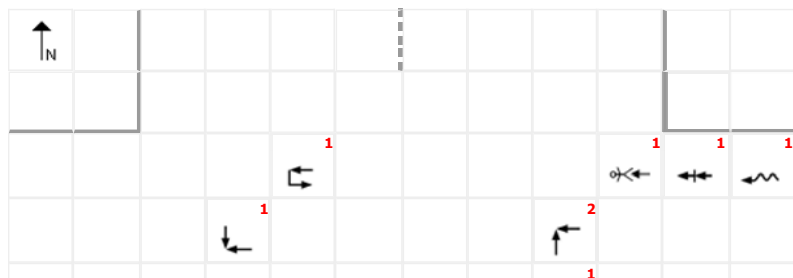
▼ CRASH TYPES BAR CHART



▼ CRASH TYPES PIE CHART



▼ INTERSECTION DIAGRAM





Crash Type Legend

- Head On
- Left Entering
- Left Leaving
- Left Rear
- Other
- Pedestrian
- Rear End
- Right Angle
- Right/Through

Fatalities: 0, Injuries: 8, Damages: \$ 202,100, Vehicles: 41, Pedestrians: 1, Bicycles: 0, Crash Rate: *not available*, Crash Severity: 1.75

▼ CRASH TYPE SUMMARY



Expand ▼

Crash Type	HSMV Number	On Street	Intersecting Street	Dir	Dist	Weather	Alc/Drug Use	Date	Time	PDF	Fatalities	Injuries	Damages	Lighting	City	Jurisdiction	Form Type	Sections
EW Head On (2 records)																		
	08141905	Northlake Blvd	Hall Blvd	W	50	Clear		11-05-2015	07:28 am		0	0	1000	Daylight	Unincorporated		Short	2
	81421905	Northlake Blvd	Hall Blvd	W	50	Clear		11-05-2015	07:28 am		0	0	1000	Daylight	Unincorporated		Short	2
W Pedestrian (1 record)																		
	81456430	Northlake Blvd			0	Clear		12-28-2016	09:20 am		0	1	5000	Daylight	Unincorporated		Long	2
N Other (1 record)																		
	81495624	Northlake Blvd	Hall Blvd		0	Clear		01-27-2018	11:14 pm		0	0	20000	Dark (No Street Light)	Unincorporated		Long	2
W Other (1 record)																		
	81433521	Northlake Blvd			0	Clear		01-21-2016	07:43 pm		0	0	200	Dark (No Street Light)	Unincorporated		Long	2
E Rear End (1 record)																		
	81456905	Northlake Blvd	Hall Blvd	E	30	Clear		09-16-2016	07:15 am		0	0	12000	Daylight	Unincorporated		Short	4
N Rear End (3 records)																		
	81456696	Hall Blvd	Northlake Blvd		0	Clear		10-05-2016	05:18 pm		0	0	1000	Daylight	Unincorporated		Long	2
	81489528	Hall Blvd	Northlake Blvd		0	Rain		01-02-2018	02:16 pm		0	0	1000	Daylight	Unincorporated		Short	2

81511311	Hall Blvd	Northlake Blvd		0	Clear		20-2018	07:08 am		0	0	1000	Daylight	West Palm Beach		Short	2
W Rear End (1 record)																	
81453828	Northlake Blvd	Hall Blvd	E	100	Clear		08-07-2016	11:00 am		0	0	500	Daylight	Pahokee		Long	2
E Right/Through (1 record)																	
81433525	Northlake Blvd	Hall Blvd		0	Cloudy		12-20-2015	03:45 pm		0	0	30000	Daylight	Unincorporated		Long	2
N Left Rear (1 record)																	
81474065	Northlake Blvd	Hall Blvd		0	Clear		05-06-2017	07:03 pm		0	2	10000	Daylight	Unincorporated		Long	2
S Left Leaving (1 record)																	
81505937	Northlake Blvd	Hall Blvd		0	Clear		05-09-2018	07:26 am		0	0	12000	Daylight	Unincorporated		Long	2
W Left Entering (2 records)																	
81459246	Northlake Blvd			0	Clear		11-14-2016	06:17 pm		0	0	1200	Dusk	Loxahatchee Groves		Short	2
81478095	Northlake Blvd	Hall Blvd		0	Cloudy		05-23-2017	09:12 pm		0	1	40000	Dark (Street Light)	Unincorporated		Long	2
NE Right Angle (2 records)																	
81429083	Northlake Blvd	Hall Blvd		0	Clear		01-07-2016	01:52 pm		0	2	12000	Daylight	Unincorporated		Long	2
81461489	Northlake Blvd	Hall Blvd		0	Clear		11-30-2016	11:42 am		0	0	9000	Daylight	Unincorporated		Long	2
NW Right Angle (2 records)																	
81474154	Northlake Blvd	Hall Blvd		0	Clear		06-23-2017	07:08 pm		0	2	20200	Daylight	Unincorporated		Long	2
81494488	Northlake Blvd	Hall Blvd		0	Clear		02-08-2018	04:21 pm		0	0	2000	Daylight	Unincorporated		Long	2
SW Right Angle (1 record)																	
81447053	Northlake Blvd	Hall Blvd		0	Rain		06-10-2016	12:45 pm		0	0	23000	Daylight	Unincorporated		Long	2