



INDIAN TRAIL IMPROVEMENT DISTRICT – TRAFFIC CALMING PILOT PROGRAM PLUS FDOT LOCAL INITIATIVES PROGRAM (LIP) TRAFFIC CALMING

EXHIBIT "A"

LEGEND

- State Roads
- County Roads
- ITID Roads
- Existing Traffic Calmed Roads
- Existing Traffic Signal
- Major Canals
- Existing dead-End roads
- School
- Mid Block Island
- Raised Median Approach
- Speed Table Seminole Style

Proposed Raised Median Approach (4-way stop)
Hall and Temple
★ Intersection Improvement

Proposed Mid Block Raised Islands along Hall Blvd at the mid block location between:

- 1.) 72nd to 73rd
- 2.) 74th to Key Lime
- 3.) Key Lime to 75th

■ Traffic Calming Pilot Program along 140th Ave N

- 1-Traffic Circle at Temple
- 1-Radar Sign at 75th Ln N
- 2-Speed Cushions at 72nd Ct N and 82nd Ln N

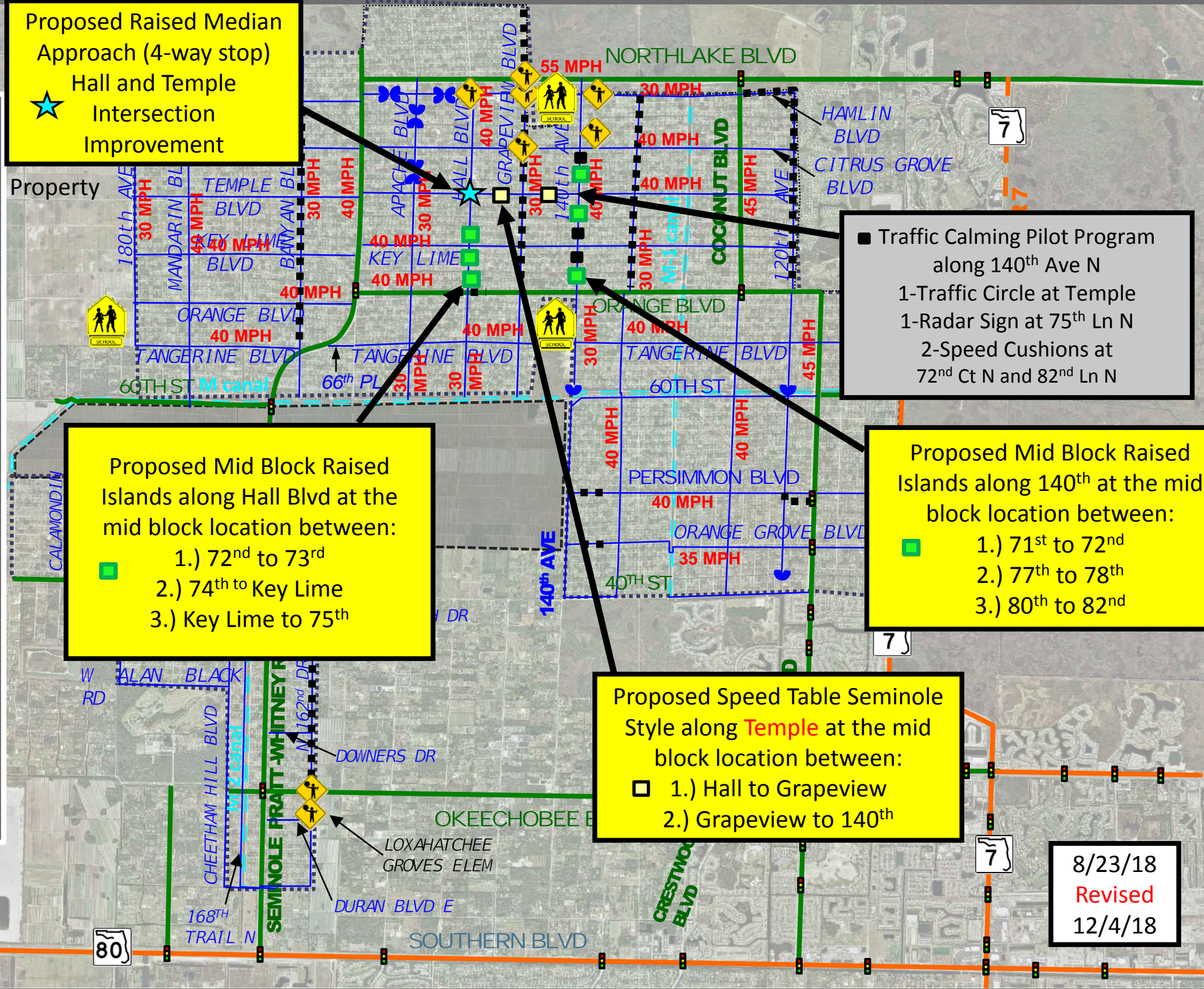
Proposed Mid Block Raised Islands along 140th at the mid block location between:

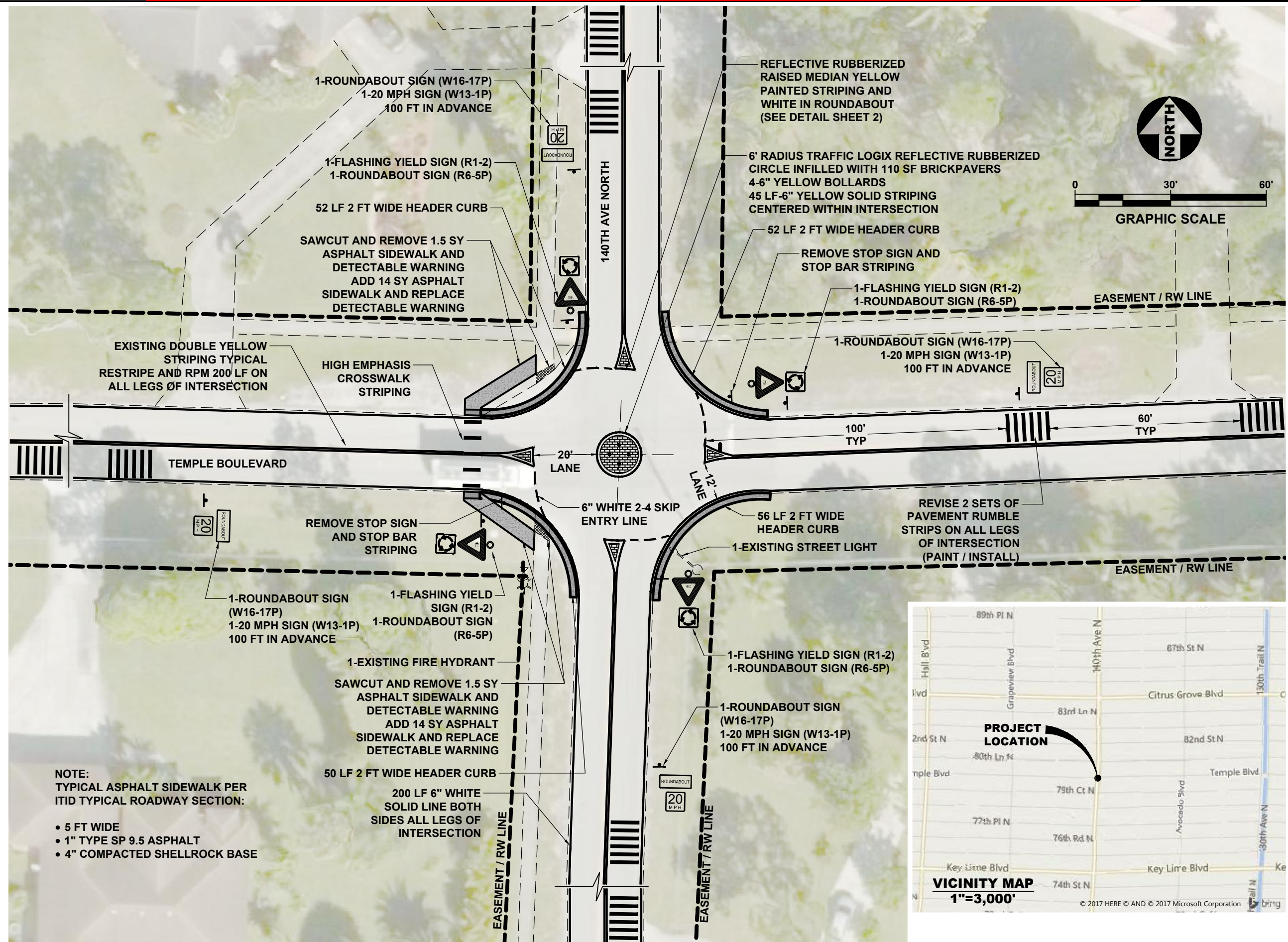
- 1.) 71st to 72nd
- 2.) 77th to 78th
- 3.) 80th to 82nd

Proposed Speed Table Seminole Style along Temple at the mid block location between:

- 1.) Hall to Grapeview
- 2.) Grapeview to 140th

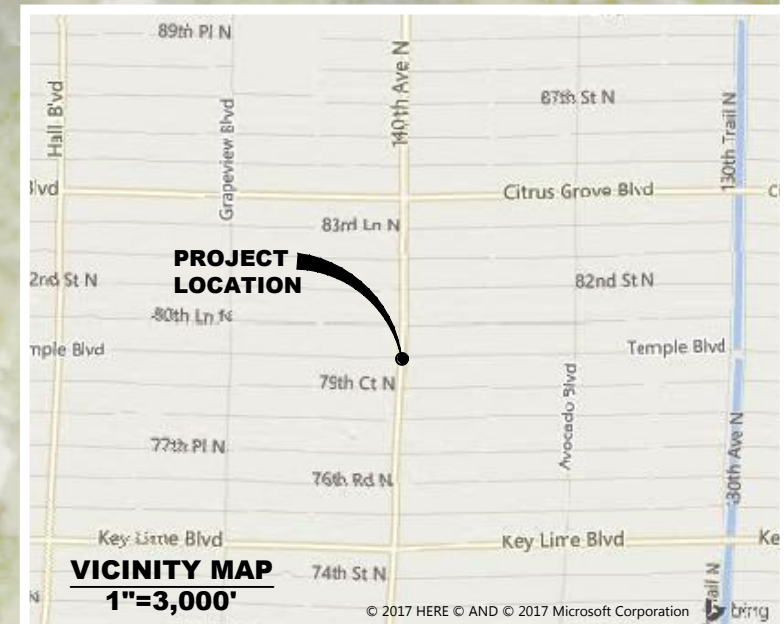
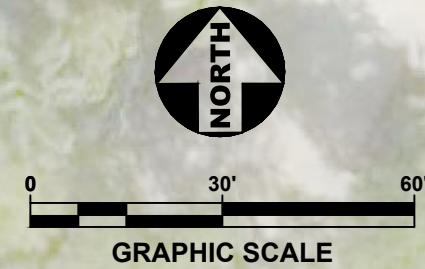
8/23/18
Revised
12/4/18





NOTE:
 TYPICAL ASPHALT SIDEWALK PER
 ITID TYPICAL ROADWAY SECTION:

- 5 FT WIDE
- 1" TYPE SP 9.5 ASPHALT
- 4" COMPACTED SHELLROCK BASE



201 NW Flagler Ave., Ste. 201
 Stuart, Florida 34994
 Phone: (772) 692-4344
 Fax: (772) 692-4341

CAPTEC
 Engineering, Inc.

Civil Engineering Professionals
 No. EB-000767

| | |
|---------------|------------|
| DATE: | 8/17/18 |
| DRAWN BY: | ADD |
| DESIGNED BY: | ADD |
| CHECKED BY: | JWC |
| PROJECT NO.: | 1522.025.1 |
| HORIZ. SCALE: | 1" = 30' |
| VERT. SCALE: | N/A |
| CADD FILE: | Base.dwg |

| NO. | DATE | BY | REVISIONS |
|-----|---------|-----|---------------------------|
| 1 | 8/13/18 | ADD | ADD CONCRETE RIBBON CURB |
| 2 | 8/13/18 | ADD | APPROVED FOR CONSTRUCTION |

SCALE VERIFICATION

1
 0

SOLID BAR IS EQUAL TO ONE INCH ON ORIGINAL DRAWING. ADJUST ALL SCALED DIMENSIONS ACCORDINGLY.

INDIAN TRAIL IMPROVEMENT DISTRICT TRAFFIC CALMING PILOT PROGRAM
 PALM BEACH COUNTY, FLORIDA

TRAFFIC CIRCLE PLAN

Joseph W. Capra
 201 N.W. Flagler Ave., Ste. 201
 Stuart, Florida 34994
 P.E. No. 37638

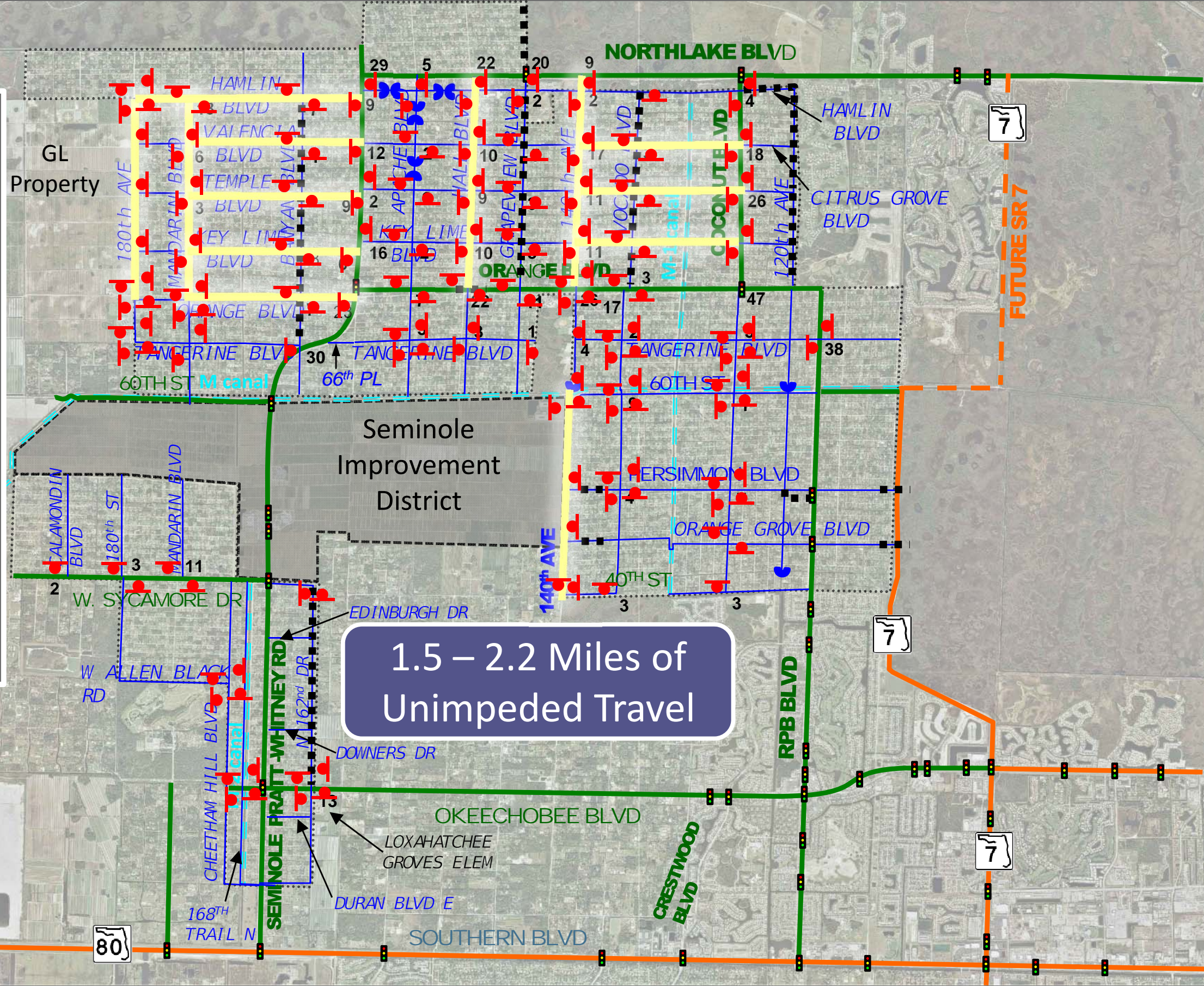


EXISTING TRAFFIC STOP SIGNS

EXHIBIT "F"

LEGEND

- State Roads
- County Roads
- ITID Roads
- Existing Traffic Calmed Roads
- Existing Traffic Signal
- Major Canals
- Existing dead-End roads
- Existing Stop sign
- Prevailing Travel Lanes



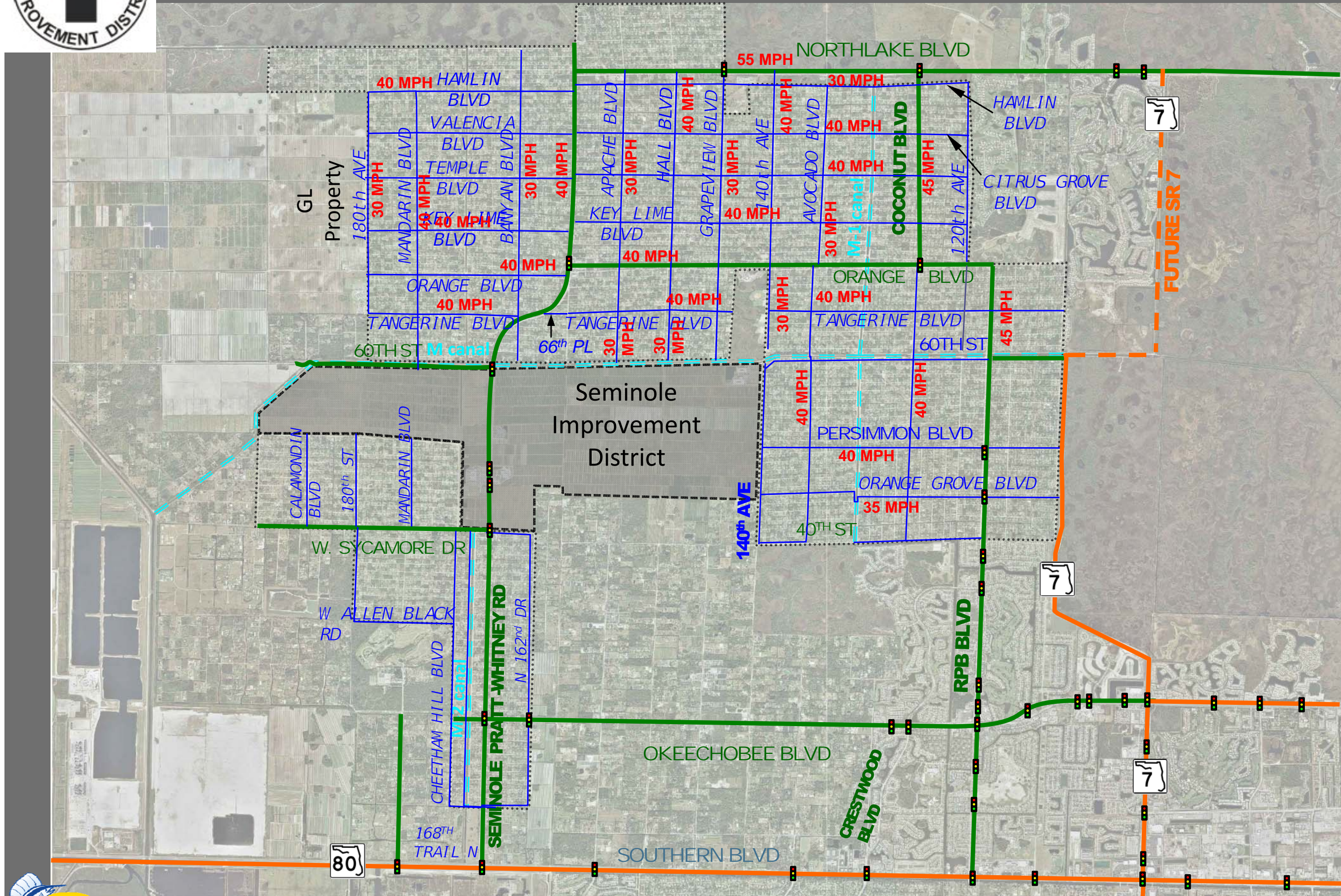
1.5 – 2.2 Miles of Unimpeded Travel





SPEED LIMITS

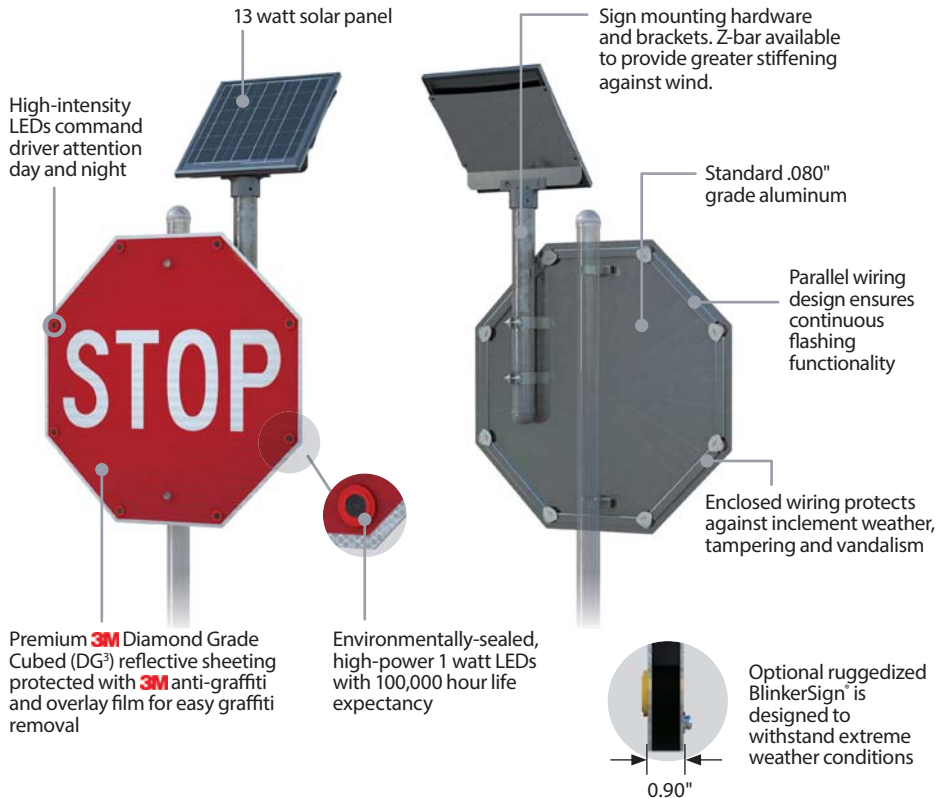
EXHIBIT "G"



LED-ENHANCED WARNING ALERTS

BLINKERSIGN® FLASHING LED SIGNS

BlinkerSign® Flashing LED signs are edge-lit signs engineered to capture drivers' attention and increase roadway compliance while utilizing highly visible amber, red, orange and white LEDs dependent upon the sign face.



HIGH QUALITY, MADE IN THE USA

- Manufactured in Brown Deer, Wisconsin, each BlinkerSign® is engineered to withstand the harshest environmental conditions.

SIMPLE INSTALLATION



- With a lightweight, fully assembled design, BlinkerSigns are quick and easy to install onto new or existing round, square or wood posts.



MUTCD-COMPLIANT

- Each BlinkerSign® is compliant with MUTCD Chapters 2A, 2B, 2C or 7B as applicable and flash in accordance with MUTCD section 2A.07.

24/7 BLINKERSIGN® PART NUMBERS

■ Poles sold separately. See page 47 for common pole kits.

| BLINKERSIGN® | SIZE | POWER | PART NUMBERS |
|--|------|-------|--------------|
|  R1-1 | 30" | Solar | 2180-00209 |
| | | AC | 600498 |
| | 36" | Solar | 2180-00208 |
| | | AC | 600499 |
| | 48" | Solar | 2180-00207 |
| | | AC | 600500 |
|  W11-2 | 24" | Solar | 2180-00212 |
| | | AC | 600501 |
| | 30" | Solar | 2180-00214 |
| | | AC | 600502 |
| | 36" | Solar | 2180-00232 |
| | | AC | 600503 |

| BLINKERSIGN® | SIZE | POWER | PART NUMBERS |
|---|-------------|-------|--------------|
|  S1-1 | 30" | Solar | 2180-00202 |
| | | AC | 600507 |
| | 36" | Solar | 2180-00215 |
| | | AC | 600508 |
| | 48" | Solar | 101551 |
| | | AC | 600509 |
|  R5-1A | 30"W X 18"H | Solar | 2180-00287 |
| | | AC | 600504 |
| | 36"W X 24"H | Solar | 2180-c00929 |
| | | AC | 600505 |
| | 42"W X 30"H | Solar | 2180-00267 |
| | | AC | 600506 |

Fluorescent Yellow Green is mandatory for school zone signs, optional for pedestrian and bicycle applications.